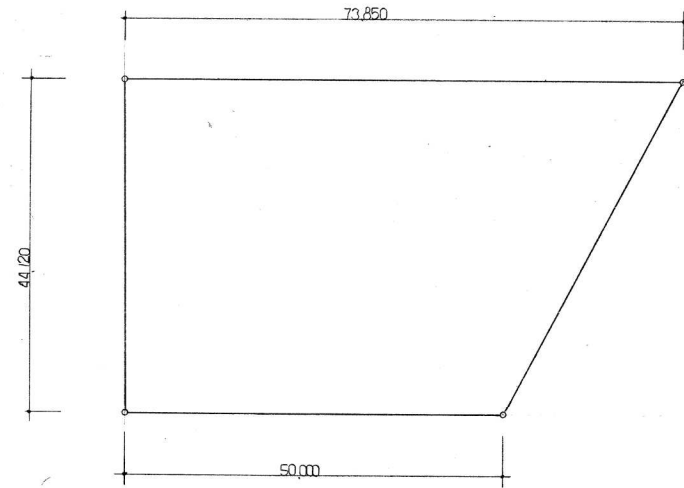
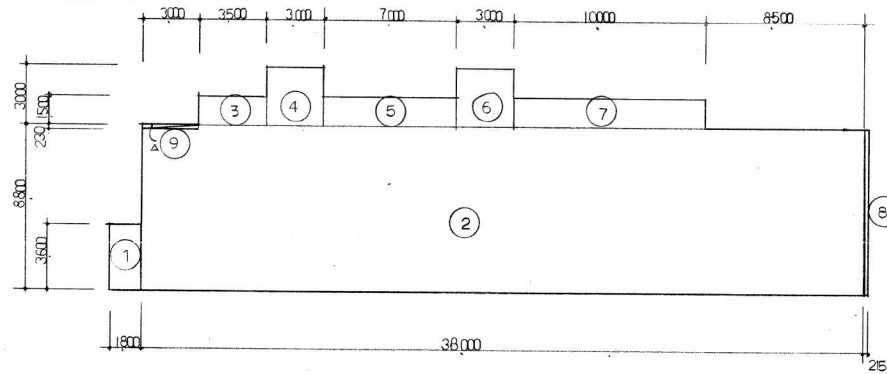


敷地面積 1:500



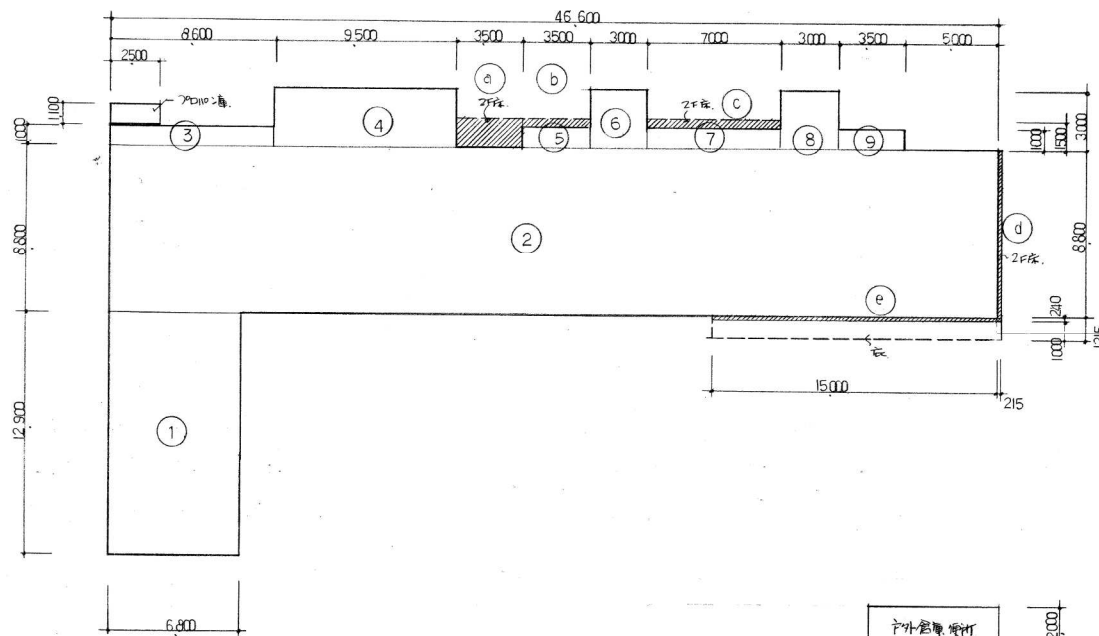
$$\frac{(73,850 + 50,000) \times 44,120}{2} = 2,732,131 \text{ (m}^2\text{)}$$

床面積、建築面積 1:200



2F床面積

1	1,800 × 3,600 =	6,480
2	38,000 × 8,800 =	334,400
3	3,500 × 1,500 =	5,250
4	3,000 × 3,000 =	9,000
5	7,000 × 1,500 =	10,500
6	3,000 × 3,000 =	9,000
7	10,000 × 1,500 =	15,000
8	0,215 × 8,800 =	1,892
9	△ 3,000 × 0,230 = △	0,690
2F 合計		391,522



1F床面積

1	6,800 × 12,900 =	87,720
2	46,600 × 8,800 =	410,080
3	8,600 × 1,000 =	8,600
4	9,500 × 3,000 =	28,500
5	3,500 × 1,000 =	3,500
6	3,000 × 3,000 =	9,000
7	7,000 × 1,000 =	7,000
8	3,000 × 3,000 =	9,000
9	3,500 × 1,000 =	3,500
1F 合計		566,900

床面積合計

1F	566,900
2F	391,522
合計	958,422

建築面積

a	3,500 × 1,500 =	5,250
b	3,500 × 0,500 =	1,750
c	7,000 × 0,500 =	3,500
d	0,240 × 8,800 =	2,112
e	15,215 × 0,215 =	3,271
1F 床面積		566,900
建築面積合計		582,783

POPノ庫

POPノ庫	2,900 × 1,500 =	4,350
POPノ庫 建築面積		4,350

テラス

テラス	6,800 × 2,000 =	13,600
テラス 建築面積		13,600